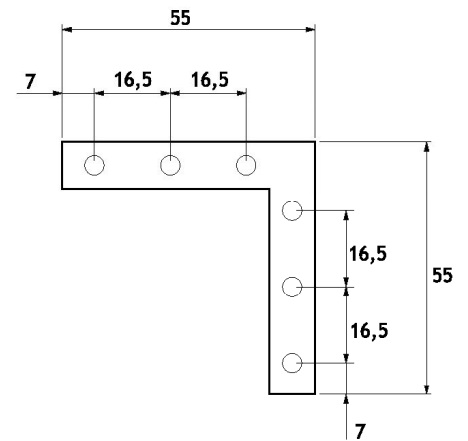
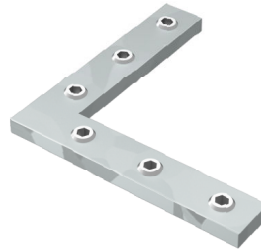
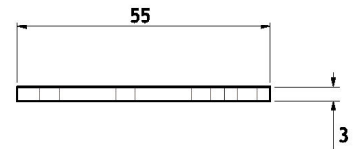
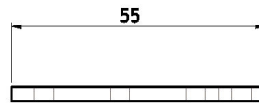
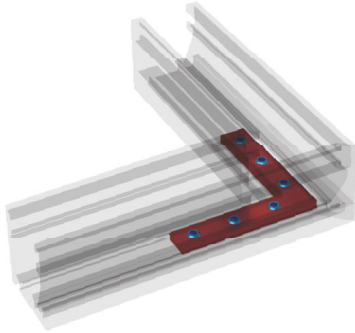


## MPQ02



**MAGNA PARS** connettore di fissaggio angolare per profili  
Si utilizza con tutti gli estrusi del sistema  
Completo di grani di fissaggio  
Realizzato in acciaio galvanizzato

**MAGNA PARS** angular fixing connector for profiles  
It is used with all system extrusions  
Grub screws included  
Zinc plated steel manufacturing

